

glass canopy  
(optional on request)

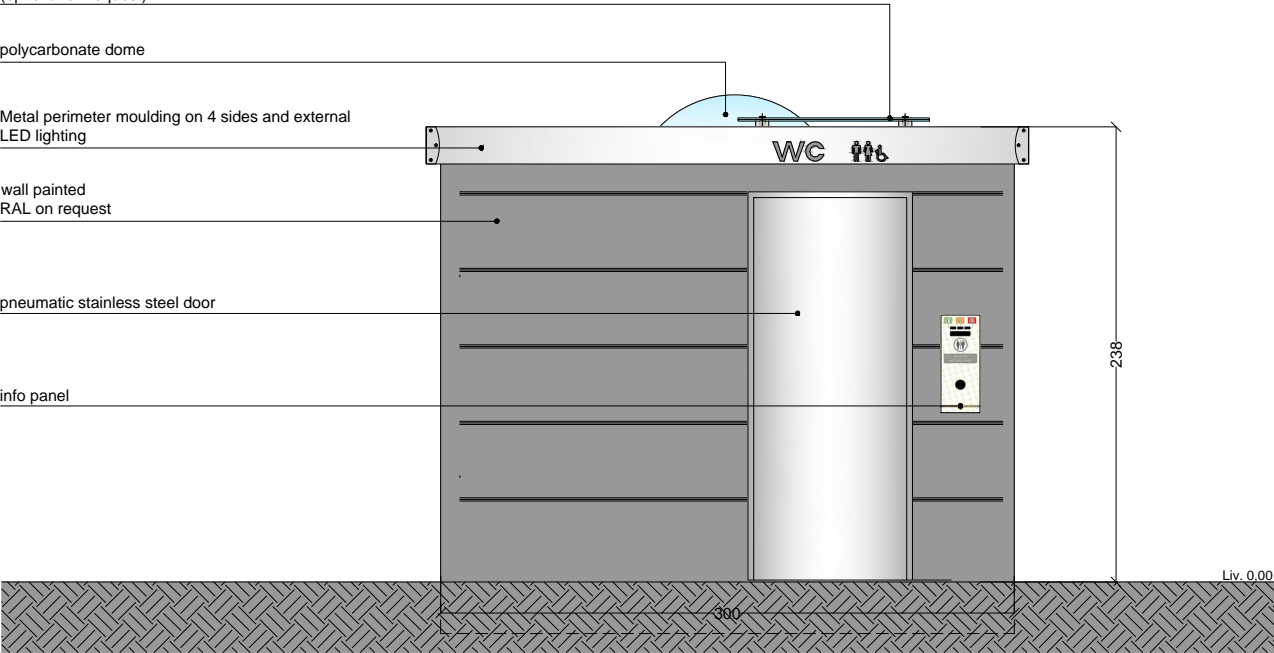
polycarbonate dome

Metal perimeter moulding on 4 sides and external LED lighting

wall painted  
RAL on request

pneumatic stainless steel door

info panel

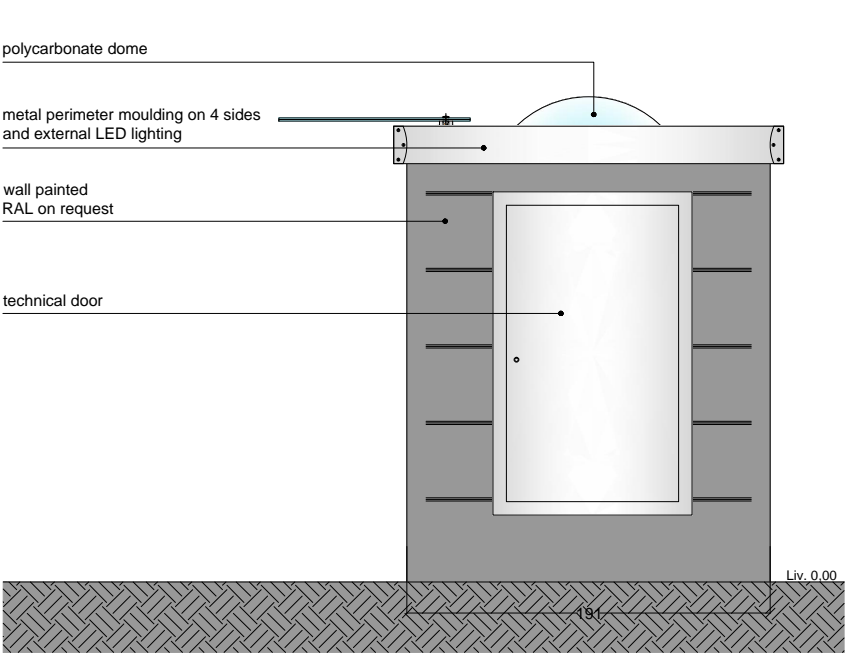


polycarbonate dome

metal perimeter moulding on 4 sides  
and external LED lighting

wall painted  
RAL on request

technical door



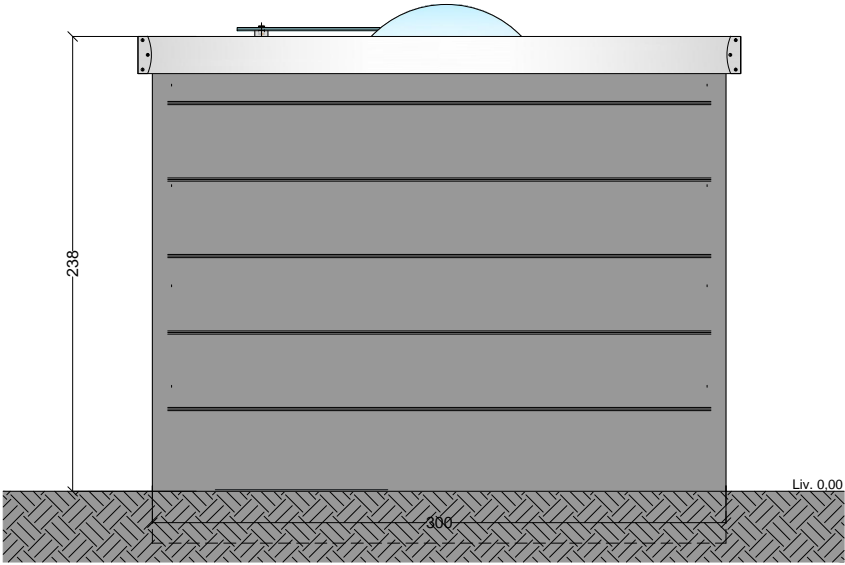
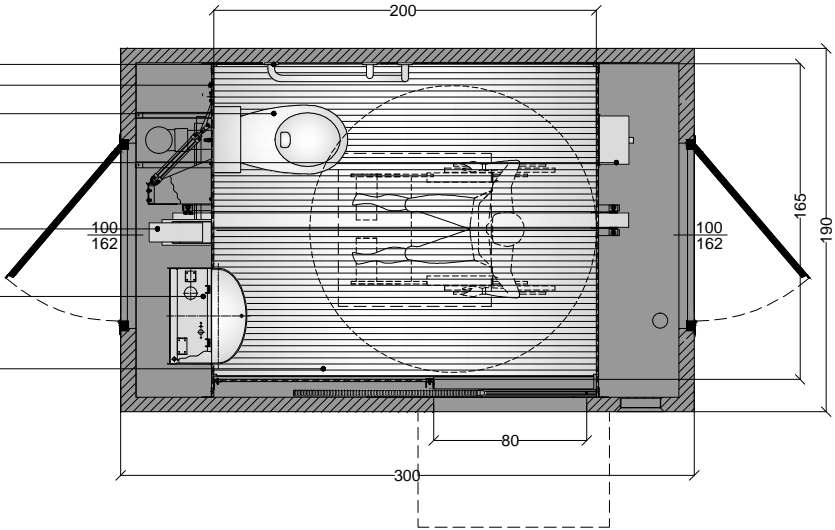
disable handrail  
HPL panels  
wall-hung ceramic wc-bowl



in-built stainless  
steel waste basin

in-built stainless steel  
toilet dispenser

stainless steel washbasin  
with automatic dispenser

aluminium floor  
non-slip



 PTMatic S.r.l. Via Grotto, 1 20010 Bolognina (MI) www.ptmatic.it	Rev. 1   Data 08/04/2015   Nota:	 Scala 1:10 Dis. da Appr. da
	CODIFICA DISEGNO: 99320.R1-Arch.-TMAX.2014	
	OGGETTO: TMAX-PLAN AND VIEWS-MODEL "Amsterdam"	
	Materiale:	
	Note:	

polycarbonate dome

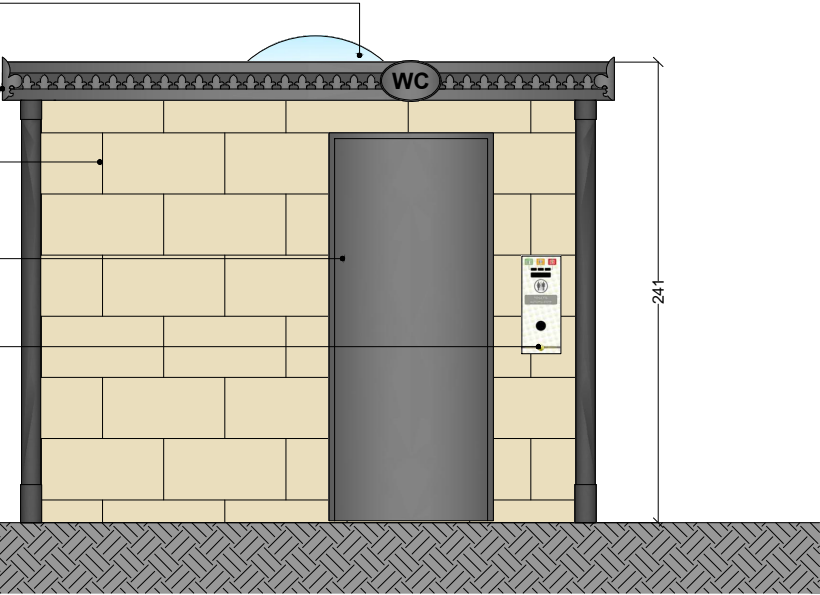
roof Metal perimeter moulding, type "historic"  
cornice, gray mica

walls with 30x60 cm grès tiles

pneumatic stainless steel door

info panel

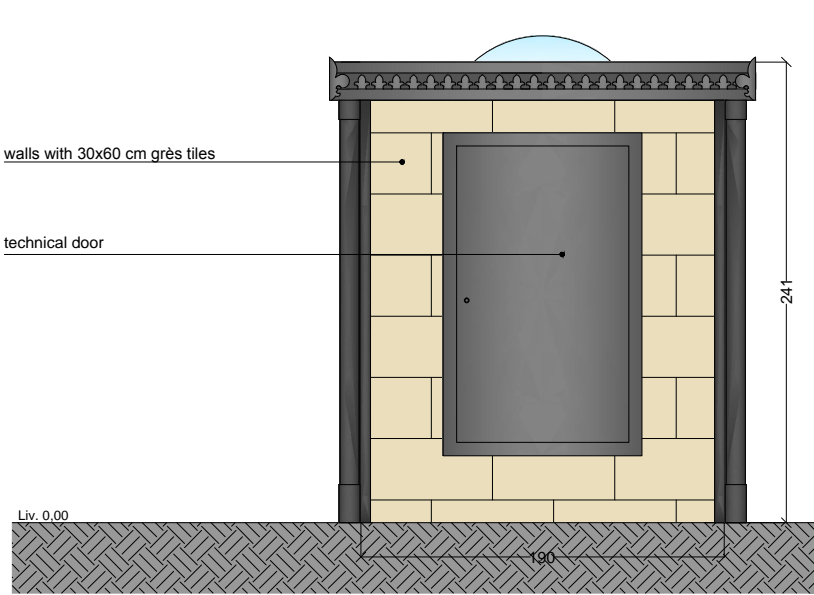
Liv. 0.00



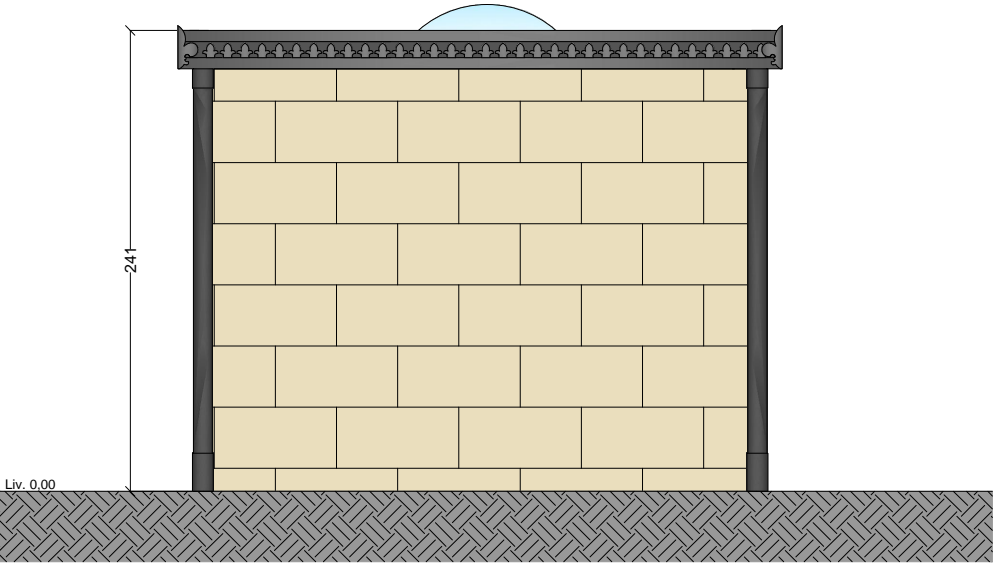
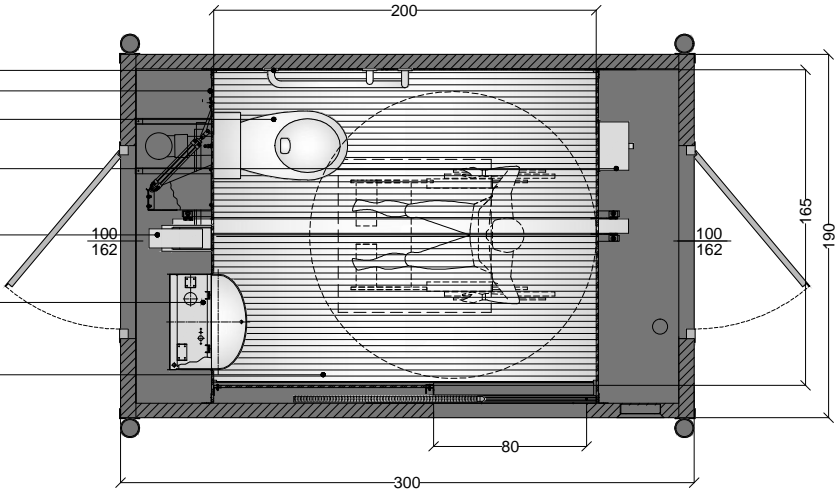
walls with 30x60 cm grès tiles


technical door

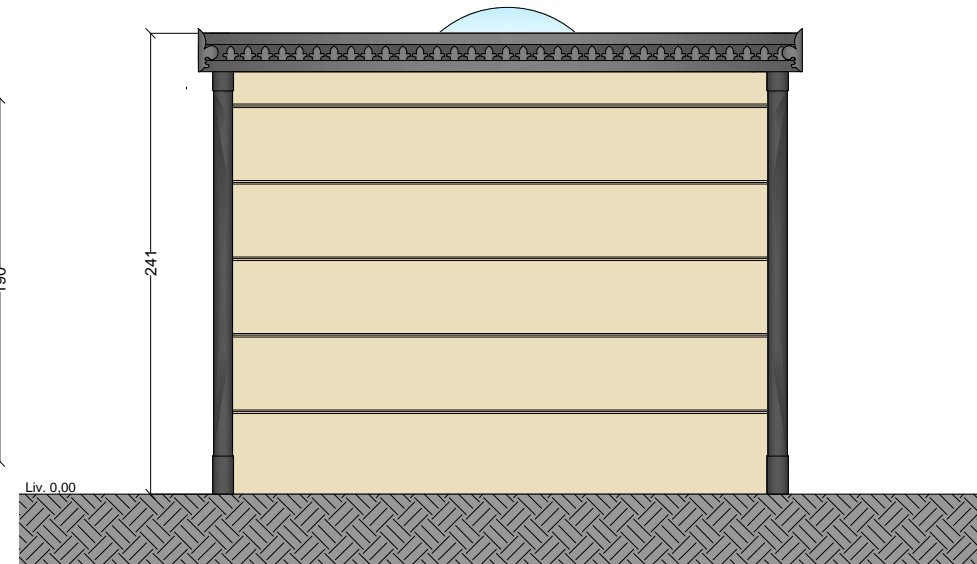
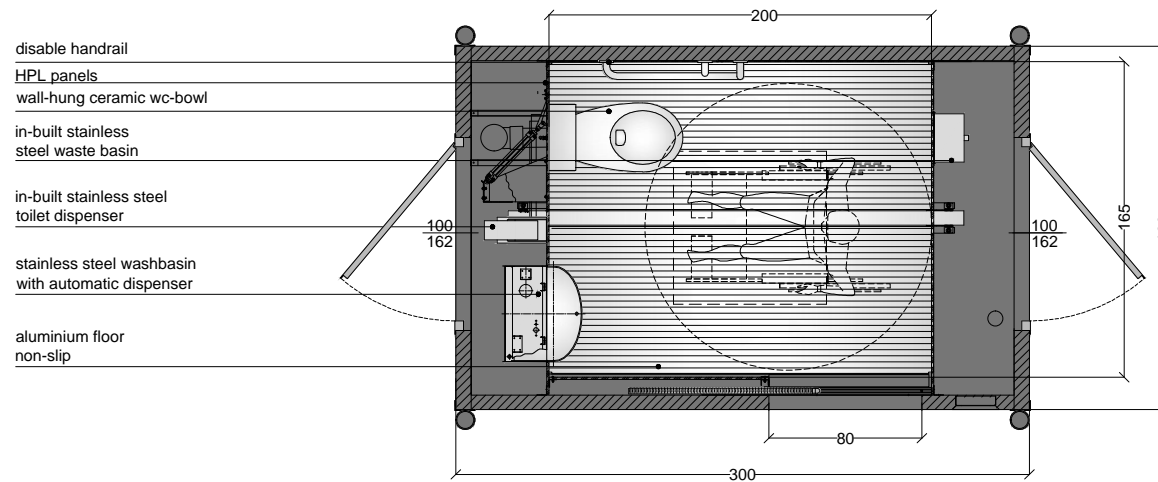
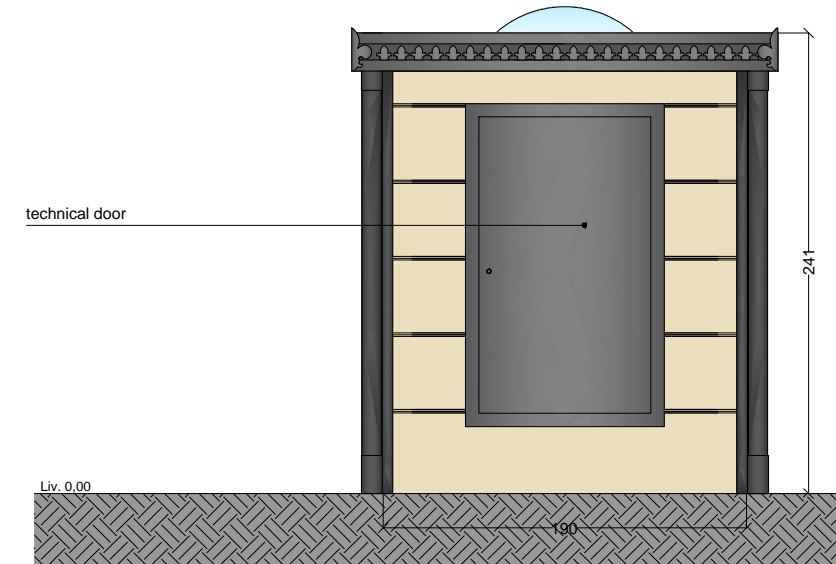
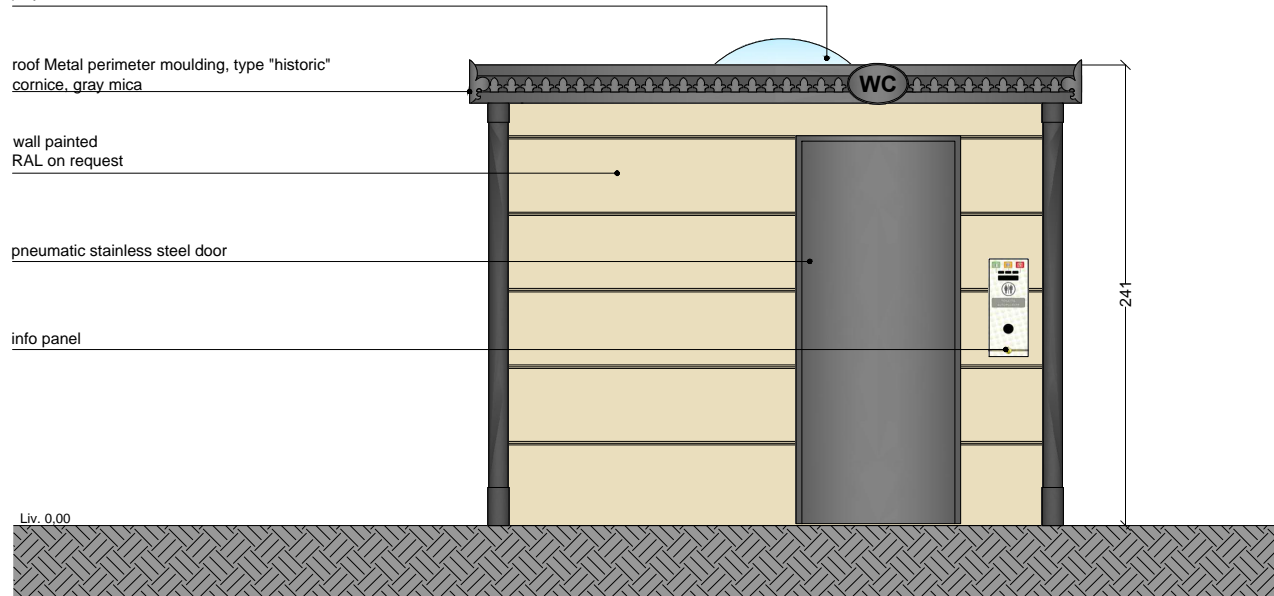
Liv. 0.00



disable handrail  
HPL panels  
wall-hung ceramic wc-bowl  
in-built stainless  
steel waste basin  
in-built stainless steel  
toilet dispenser  
stainless steel washbasin  
with automatic dispenser  
aluminium floor  
non-slip



 PTMatic S.r.l. Via Grotto, 1 20010 Bolognola (MI) www.ptmatic.it	Rev. 1   Data 08/04/2015   Nota:	CODIFICA DISEGNO: <b>99320.R1-Arch-TMAX.2014</b> OGGETTO: <b>TMAX-PLAN AND VIEWS-MODEL "Milano"</b> Materiale: Note:	Travola
			Scala
			1:10
			Dis. da
			Appr. da



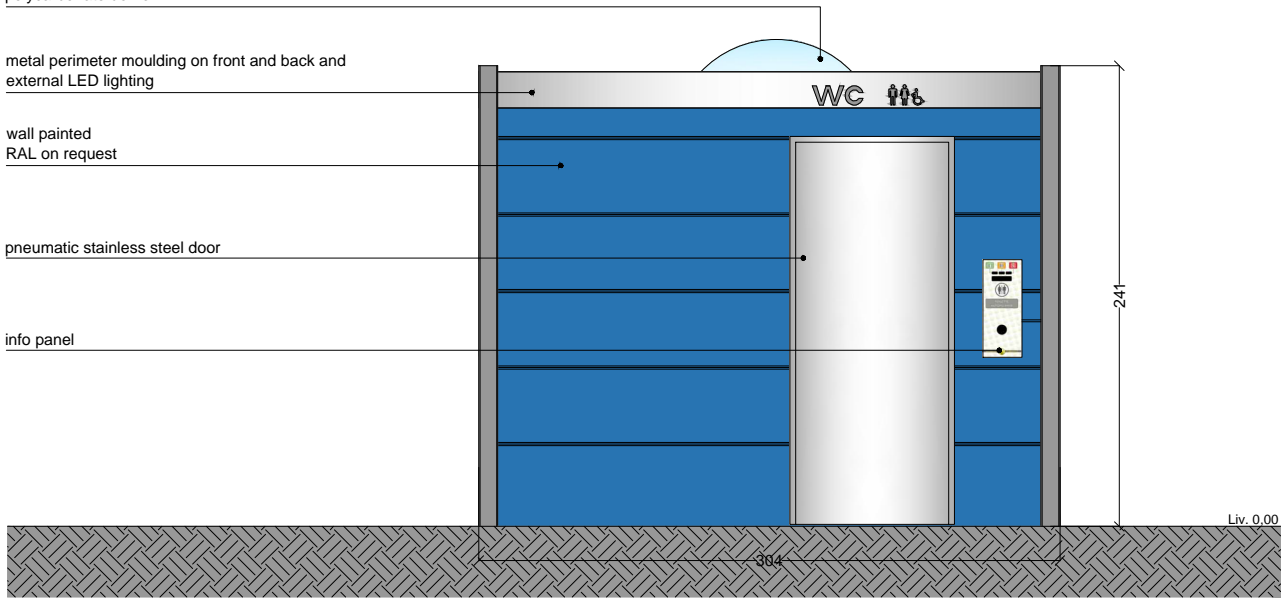
polycarbonate dome

metal perimeter moulding on front and back and  
external LED lighting

wall painted  
RAL on request

pneumatic stainless steel door

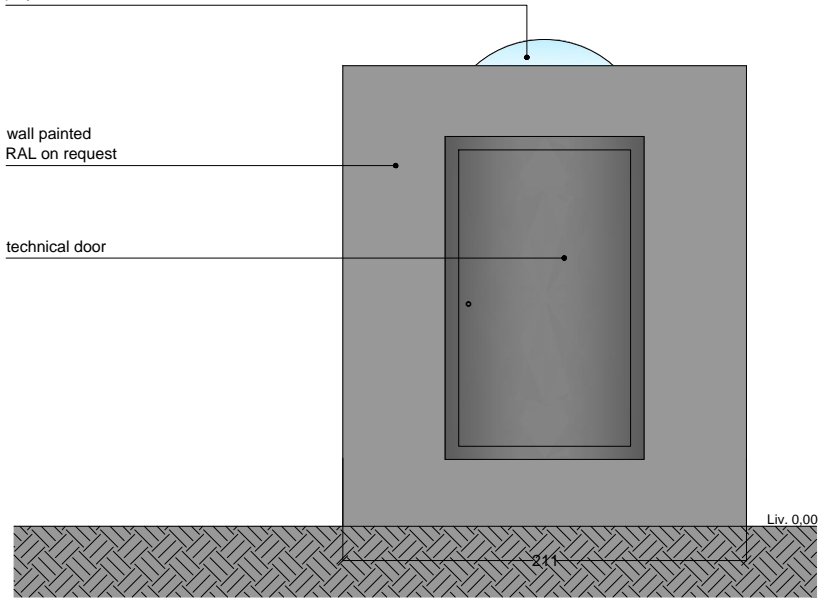
info panel



polycarbonate dome

wall painted  
RAL on request

technical door



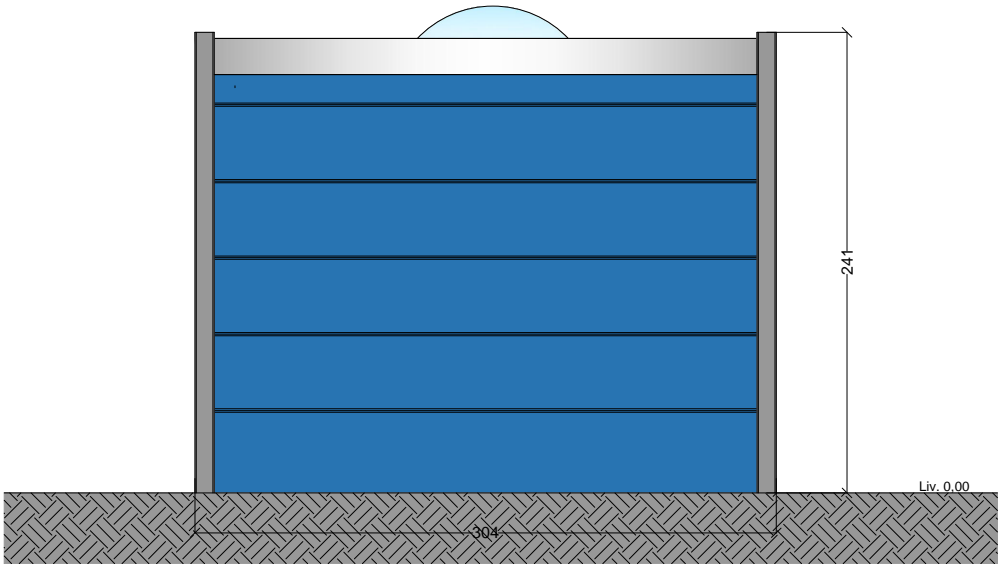
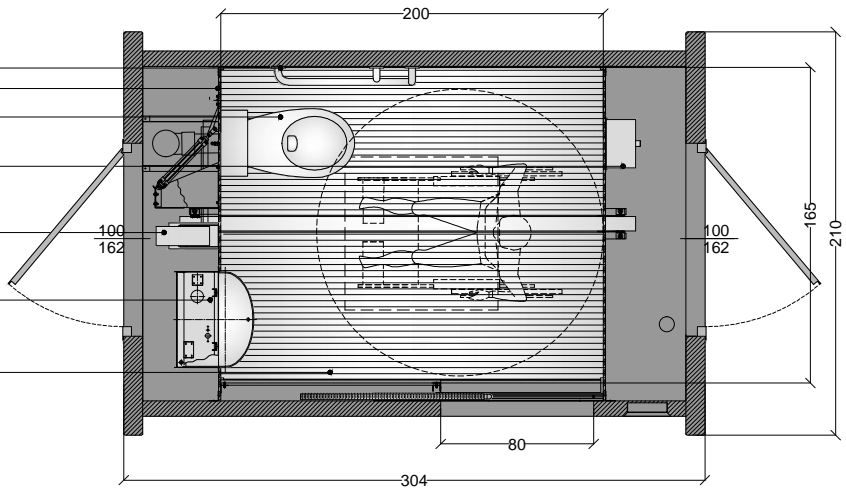
disable handrail  
HPL panels  
wall-hung ceramic wc-bowl

in-built stainless  
steel waste basin

in-built stainless steel  
toilet dispenser

stainless steel washbasin  
with automatic dispenser

aluminium floor  
non-slip



Rev. 1 Data 08/04/2015 | Nota:



CODIFICA DISEGNO:  
99320.R1-Arch.-TMAX.2014

OGGETTO:  
TMAX-PLAN AND VIEWS-MODEL "Milano"

Materiale:

Note:

Travola

Scala

1:10

Dis. da

Appr. da